



UNIVERSITY OF GOTHENBURG

This is an author produced version of a paper published in **Psychopharmacology (Berl)**. 0033-3158

This paper has been peer-reviewed but does not include the final publisher proof-corrections or journal pagination.

Citation for the published paper:

**Jerlhag E, Egecioglu E, Dickson SL, Engel JA.**

**Ghrelin receptor antagonism attenuates cocaine- and amphetamine-induced locomotor stimulation, accumbal dopamine release, and conditioned place preference.**

**Psychopharmacology (Berl).**

**2010 Sep; 211(4):415-22.**

**URL: <http://dx.doi.org/10.1007/s00213-010-1907-7>.**

Access to the published version may require subscription. Published with permission from: **Springer-Verlag**

**GUP**

Gothenburg University Publications

<http://gup.ub.gu.se/gup/>

**Ghrelin receptor antagonism attenuates cocaine- and amphetamine-induced locomotor stimulation, accumbal dopamine release and conditioned place preference.**

Elisabet Jerlhag<sup>1\*</sup>, Emil Egecioglu<sup>2</sup>, Suzanne L. Dickson<sup>2</sup> and Jörgen A. Engel<sup>1</sup>

<sup>1</sup> Section for Pharmacology and <sup>2</sup> Section for Physiology/Endocrinology, Institute of Neuroscience and Physiology, The Sahlgrenska Academy at the University of Gothenburg, SE-405 30 Gothenburg, Sweden

\*Corresponding author. Tel.: +46-31-786 34 18; Fax: +46-31-786 32 84

E-mail address: elisabet.jerlhag@pharm.gu.se

Short title: Ghrelin and drug-induced reward

**Key words: Psychostimulant drugs, ghrelin, reinforcement,**

## **Abstract**

Recently we demonstrated that genetic or pharmacological suppression of the central ghrelin signalling system, involving the growth hormone secretagogue receptor 1A (GHS-R1A), lead to a reduced reward profile from alcohol. As the target circuits for ghrelin in the brain include a mesolimbic reward pathway that is intimately associated with reward-seeking behaviour, we sought to determine whether the central ghrelin signalling system is required for reward from drugs of abuse other than alcohol, namely cocaine or amphetamine. We found that amphetamine- as well as cocaine-induced locomotor stimulation and accumbal dopamine release were reduced in mice treated with a GHS-R1A antagonist. Moreover, the ability of these drugs to condition a place preference was also attenuated by the GHS-R1A antagonist. Thus GHS-R1A appears to be required not only for alcohol-induced reward, but also for reward induced by psychostimulant drugs. Our data suggest that the central ghrelin signaling system constitutes a novel potential target for treatment of addictive behaviours such as drug dependence.

## **Introduction**

Since its discovery in 1999 (Kojima et al. 1999), the stomach-derived hormone ghrelin has been studied extensively in the context of appetite and energy balance regulation (Nogueiras et al. 2006). It seems clear that ghrelin exerts its orexigenic and pro-obesity effects by interacting with discrete hypothalamic cell groups that include leptin-responsive circuits in the arcuate nucleus, such as the neuropeptide Y cell group (Dickson and Luckman 1997; Hewson et al. 2002; Nogueiras et al. 2006). Recently, however, we and others have reported that ghrelin also activates key CNS pathways involved in reward, that include the mesolimbic dopamine system (Abizaid et al. 2006; Jerlhag et al. 2006) and, more specifically, the cholinergic-dopaminergic reward link (Jerlhag et al. 2007; Jerlhag et al. 2008). By this route, ghrelin may increase the incentive value of both natural and artificial rewards and hence, increase reward-seeking behaviour.

The emerging neurobiology of central ghrelin signalling system indicates that it may serve as a common denominator to enhance search for rewards such as drugs of abuse and rewarding foods. This is evidenced, in part, by human function imaging studies in which ghrelin was shown to alter the brain response to visual food cues, most markedly in the ventral striatum, an area also activated by psychostimulant drugs (see e.g. Wise and Bozarth, 1987; Malik et al. 2008). In rodents, ghrelin has been shown to increase foraging for food (Keen-Rhinehart and Bartness 2004), to enhance cocaine-induced locomotor stimulation, to condition a place preference for cocaine and to induce cocaine-seeking behaviours (Wellman et al. 2005; Davis et al. 2007; Tessari et al. 2007). Recently, we demonstrated that central ghrelin signalling system is required for alcohol reward; we found that the ability of alcohol to increase

locomotor activity, to induce accumbal dopamine release and to condition a place preference were abolished in ghrelin receptor (GHS-R1A) knockout mice and also in mice treated with two different GHS-R1A antagonists (Jerlhag et al. 2009). In the present study, such tests were also used to determine whether the central ghrelin signalling system is required for the rewarding properties of cocaine and amphetamine in mice treated peripherally with a GHS-R1A antagonist.

## Materials and Methods

### *Animals*

Adult post-pubertal age-matched male NMRI mice (8-12 weeks old and 25-40 g body weight; B&K Universal AB, , Sollentuna, Sweden) were used for studies of locomotor activity, dopamine release and conditioned place preference (CPP) testing as such studies are well documented in this strain (Jerlhag et al. 2006; Jerlhag et al. 2007; Jerlhag et al. 2008; Jerlhag 2008). All mice were maintained at 20°C with 50% humidity and a 12/12 hour light/dark cycle (lights on at seven am). Tap water and food (Normal chow; Harlan Teklad, Norfolk, England) were supplied *ad libitum*, except during the experimental setups. Studies were approved by the Ethics Committee for Animal Experiments in Gothenburg, Sweden

### *Drugs*

Dex-amphetamine sulphate (RBI; Natick, USA) was dissolved in vehicle (0.9% sodium chloride solution) and was administered i.p. at a dose of two mg/kg ten minutes prior to initiation of the experiment. Cocaine (Sigma; St Louise, USA) was dissolved in the vehicle (0.9% sodium chloride solution) and was administered i.p. at a dose of ten mg/kg ten minutes prior to initiation of the experiment. Similar doses have been used previously to induce an activation of the mesolimbic dopamine system as measured by locomotor activity and accumbal dopamine release in rats (Wise and Bozarth 1987). The selected dose of JMV2959 (synthesized at the Institut des Biomolécules Max Mousseron (IBMM), UMR5247, CNRS, Montpellier 1 and 2 Universities, France), a GHS-R1A antagonist, was determined previously (six mg/kg, i.p.) (Jerlhag et al. 2009). This dose was used in all studies and was always administered ten minutes prior to drug exposure. Indeed, it has been established that

this compound, when administered peripherally, is a GHS-R1A antagonist and suppresses food intake induced by ghrelin or by the GHS-R1A agonist, hexarelin (Moulin et al. 2007; Salomé et al. 2009). Previous, radioligand binding studies have also established that JMV2959 is a GHS-R1A antagonist (Moulin et al. 2007). JMV2959 was dissolved in vehicle (0.9% sodium chloride solution). All drug challenges were part of a balanced design with regard to both the treatment order and the number of subjects per treatment. For all drug challenges 0.9% sodium chloride solution was used as vehicle.

#### *Locomotor activity experiments*

Amphetamine- or cocaine-induced locomotor stimulation was measured as most drugs of abuse cause locomotor stimulation, an effect mediated, at least in part, by their ability to enhance the extracellular concentration of accumbal dopamine (Engel et al. 1988; Engel et al. 1992). Such parameters have been suggested to be homologous effects evolving from a common mechanism involving the dopaminergic reward system, implying that these parameters reflect reward induced by drugs of abuse (Engel et al. 1988; Imperato and DiChiara 1986; Wise and Bozarth 1987). It should however be emphasized that several other neurotransmitter systems may mediate drug-induced locomotor stimulation (Engel et al. 1992). Whereas CPP-testing demonstrates drug-induced reward more directly, locomotor stimulation provides an indirect yet supportive measure. Locomotor activity was recorded as described previously (Jerlhag et al. 2006).

Locomotor activity was registered in eight sound attenuated, ventilated and dim lit locomotor boxes (420 x 420 x 200 mm, Kungsbacka mät- och reglerteknik AB,

Fjärås, Sweden). Five by five rows of photocell beams, at the floor level of the box, creating photocell detection allowed a computer-based system to register the activity of the mice. Locomotor activity was defined as the accumulated number of new photocell beams interrupted during a 60 minute period.

Mice were allowed to habituate to the locomotor activity box one hour prior to drug challenge. In separate experiments, the effects of i.p. administered JMV2959 (6 mg/kg) on amphetamine (2 mg/kg, i.p.) or cocaine (10 mg/kg, i.p.) locomotor stimulation was investigated in mice. All mice received drug treatment only twice (GHS-R1A antagonist/vehicle and psychostimulant drug/vehicle). Neither water nor food was available to the mice during the locomotor experiments. The activity registration started five minutes after the last injection and was subsequently measured for a 60 minute period

#### *In vivo microdialysis and dopamine release measurements*

For measurements of extracellular dopamine levels (that reflect dopamine release), mice were implanted unilaterally with a microdialysis probe positioned in the nucleus accumbens (N.Acc.). The surgery was performed as described thoroughly elsewhere (Jerlhag et al., 2006). In brief, the mice were anesthetized with isofluran (Isofluran Baxter; Univentor 400 Anaesthesia Unit, Univentor Ltd., Zejtun, Malta), placed in a stereotaxic frame (David Kopf Instruments; Tujunga, CA, USA) and kept on a heating pad to prevent hypothermia. The skull bone was exposed and one holes for the probe and one for the anchoring screw were drilled. The probe was randomly alternated to either the left or right side. The coordinates for N.Acc. 1.5 mm anterior to the bregma,  $\pm 0.7$  lateral to the midline and 4.7 mm below the surface of the brain



surface (Franklin and Paxinos 1996). The exposed tip of the dialysis membrane (20 000 kDa cut off with an o.d./i.d. of 310/220  $\mu\text{m}$ , HOSPAL, Gambro, Lund, Sweden) of the probe was 1 mm. All probes were surgically implanted two days prior to the experiment. After surgery the mice were kept in individual cages (Macrolon III).

In separate experiments, the effects of JMV2959 (i.p.) on amphetamine- or cocaine-induced accumbal dopamine release using microdialysis in freely moving mice was investigated. On the day of the experiment the probe was connected to a microperfusion pump (U-864 Syringe Pump; AgnThós AB) and perfused with Ringer solution at a rate of 1.5  $\mu\text{l}/\text{minute}$ . After one hour of habituation to the microdialysis set-up, perfusion samples were collected every 20 minutes. The baseline dopamine level was defined as the average of three consecutive samples before the first drug/vehicle challenge, and the increase in accumbal dopamine was calculated as the percent increase from baseline. After the baseline samples, mice were injected with JMV2959 (i.p.), which was followed by an amphetamine or cocaine (i.p.) injection in separate experimnts. The dopamine levels in the dialysates were determined by HPLC with electrochemical detection. A pump (Gyncotec P580A; Kovalent AB; V. Frölunda, Sweden), an ion exchange column (2.0 x 100 mm, Prodigy 3  $\mu\text{m}$  SA; Skandinaviska GeneTec AB; Kungsbacka, Sweden) and a detector (Antec Decade; Antec Leyden; Zoeterwoude, The Netherlands) equipped with a VT-03 flow cell (Antec Leyden) were used. The mobile phase (pH 5.6), consisting of sulfonic acid 10 mM, citric acid 200 mM, sodium citrate 200 mM, 10% EDTA, 30% MeOH, was vacuum filtered using a 0.2  $\mu\text{m}$  membrane filter (GH Polypro; PALL Gelman Laboratory; Lund, Sweden). The mobile phase was delivered at a flow rate of 0.2

ml/minute passing a degasser (Kovalent AB), and the analyte was oxidized at +0.4 V (Blomqvist et al. 1993; Westerink, 1995).

After completion of the microdialysis experiments, the locations of the probe were verified (Jerlhag et al. 2006). Only mice with probe placement in the N.Acc. were included in the statistical analysis.

#### *Verification of probe placement*

After the microdialysis experiments were completed, the location of the probe was verified. The mice were decapitated, probes were perfused with pontamine sky blue 6BX to facilitate probe localization, and the brains were mounted on a vibroslice device (752M Vibroslice; Campden Instruments Ltd., Loughborough, UK). The brains were cut in 50 µm sections and the location of the probe was determined by gross observation using light microscopy. The exact position (some correct and some misplaced) of the probe and/or guide cannula/e was verified (Franklin and Paxinos 1996).

#### *Conditioned place preference*

To further evaluate the effects of GHS-R1A on the rewarding effects of amphetamine or cocaine, CPP tests were performed in mice. A two-chambered CPP apparatus, with distinct visual and tactile cues was used (Sanchis-Segura and Spanagel 2006; Jerlhag 2008; Jerlhag et al. 2009). One compartment was defined by black and white striped walls and by a dark laminated floor whereas the other had a white unlaminated floor and walls of wooden texture. Compartments were illuminated by 45 lux. The procedure consisted of preconditioning (day 1), conditioning (days 2-5), and

postconditioning (day 6). On day 1 (preconditioning), mice were i.p. injected with vehicle and initial place preference was determined during 20 minutes, in order to determine which of the two compartments could be labelled “least preferred” for each mouse. Conditioning (20 minutes per session) was done using a biased procedure in which amphetamine or cocaine were paired to the least preferred compartment. In this biased procedure, it should be more difficult to obtain a positive CPP response. Mice received a total of two i.p. injections per day where amphetamine or cocaine were administered in the morning and vehicle conditioning in the afternoon, or *vice versa*. After drug injection the mice were placed in the appropriate compartment. On day 6 mice were placed between the two compartments and were thereafter given free access to both compartments for 20 minutes. Prior to this test session mice were acutely injected with JMV2959 (i.p.) or vehicle. As animals that receive vehicle (in both compartments) are not drug-conditioned and therefore have no drug-induced CPP response to block using an antagonist such experiments were not conducted. Previously, we have shown that JMV2959 has no effect *per se* on CPP (Jerlhag et al. 2009). CPP was calculated as the difference in % of total time spent in the drug-paired (*i.e.* least preferred) compartment during the post-conditioning and the pre-conditioning session.

#### *Radioligand Binding assays*

In order to study possible affinity of JMV2959 to the dopamine receptors (D1, D2S and D2L) radioligand binding assays were outsourced to Ricerca Biosciences, LCC (Taipei, Taiwan 112; study no AA94614).

### *Statistical analyses*

All locomotor activity data were evaluated by a two-way ANOVA followed by Bonferroni post-hoc tests comparing treatments. The microdialysis experiments were evaluated by a two-way ANOVA followed by Bonferroni post-hoc test for comparisons between different treatments and specifically at given time points. The CPP data were evaluated by a one-way ANOVA followed by Bonferroni post-hoc tests comparing treatments. Data are presented as mean  $\pm$  SEM. A probability value of  $P < 0.05$  was considered as statistically significant.

## Results

*Effects of a GHS-RIA antagonist on amphetamine-induced locomotor stimulation, accumbal dopamine release and on its ability to condition a place preference in mice.*

As expected, amphetamine increased locomotor activity, accumbal dopamine release and induced a CPP. All of these effects of amphetamine were attenuated by peripheral administration of JMV2959 (Figure 1A, 1B and 2A). Amphetamine-induced locomotor stimulation ( $P < 0.001$ ) was blocked by a single injection of JMV2959 ( $P < 0.001$ ) in mice ( $F(3,28) = 14.57$ ,  $P = 0.001$ ). Amphetamine increased accumbal dopamine release relative to vehicle treatment ( $P = 0.001$ ) and this effect was attenuated by pre-treatment with JMV2959 ( $P = 0.01$ ) (treatment  $F(3,29) = 13.31$ ,  $P = 0.001$ ; time  $F(12,348) = 15.98$ ,  $P = 0.001$ ; treatment x time interaction  $F(12,348) = 7.03$ ,  $P = 0.001$ ). This difference was evident at time interval 60 minutes ( $P < 0.01$ ). Even though JMV2959 does not completely block the amphetamine-induced dopamine release, this increase fails to reach statistical significance compared to vehicle treatment. The amphetamine-induced CPP was attenuated by an acute single injection of JMV2959 ( $F(1,14) = 6.82$ ,  $P = 0.02$ ).

*Effects of a GHS-RIA antagonist on cocaine -induced locomotor stimulation, accumbal dopamine release and on its ability to condition a place preference in mice.*

In studies parallel to those described for amphetamine, we found that JMV2959 also suppressed the effect of the powerful psychostimulant drugs, cocaine on activation of the mesolimbic dopamine system (Figure 1C, 1D and 2B). Thus, locomotor activity was greatly increased by cocaine administration (relative to vehicle treatment) ( $P < 0.001$ ) and this stimulation was attenuated by JMV2959 pre-treatment ( $P < 0.01$ ) ( $F(3,28) = 28.94$ ,  $P = 0.001$ ). JMV2959 does not completely block the cocaine-induced

locomotor stimulation compared to vehicle administration ( $P < 0.001$ ). Cocaine increased dopamine release in comparison to vehicle treatment ( $P = 0.001$ ) and this increase was also attenuated by JMV2959 ( $P = 0.001$ ) (treatment  $F(3,31) = 11.89$ ,  $P = 0.001$ ; time  $F(12,372) = 18.86$ ,  $P = 0.001$ ; treatment x time interaction  $F(12,372) = 10.10$ ,  $P = 0.001$ ). This difference was evident at time intervals 20-180 minutes ( $P < 0.01$  or  $P < 0.001$ ). Even though JMV2959 does not completely block cocaine-induced accumbal dopamine release, this increase failed to reach statistical significance compared to vehicle treatment. The cocaine-induced CPP was attenuated by an acute single injection of JMV2959 ( $F(1,13) = 8.22$ ,  $P = 0.01$ ).

Control experiments showed that neither i.p. injection, volume infused nor the GHS-R1A antagonist *per se* had any effect on locomotor activity (Figures 1A and 1C), accumbal dopamine release (Figures 1B and 1D) or CPP (Figures 2A and 2B).

#### *Probe placements*

After the experiment the location of the probe was verified and only mice with probe placement in the N.Acc. were included in the statistical analysis. It should also be emphasized that in a few mice the probe was located outside the N.Acc. and in these mice no effect of amphetamine/cocaine on accumbal dopamine release was observed (Figure 3). It should be emphasized that in a few mice the probe was located outside the N.Acc. shell and in these mice no effect of amphetamine or cocaine on accumbal dopamine release was observed (data not shown). Given that only amphetamine and cocaine increase accumbal dopamine compared to vehicle it appears less likely that the probes causes structural defects within the N.Acc. that may influence the possibility to detect dopamine release.

### *Radioligand Binding*

The radioligand binding studies show that JMV2959 does not bind to human dopamine D1, D2L and D2S receptors up to a concentration of 10  $\mu$ M, whereas JMV2959 does bind to the human GHS-R1A with an IC<sub>50</sub> of 32 nM (Moulin et al. 2007). These data support the specificity of JMV2959 as a selective GHS-R1A antagonist.

## **Discussion**

The present study demonstrates that the ghrelin signalling system, involving GHS-R1A, is required for indirect measures of the rewarding properties of the psychostimulant drugs, amphetamine and cocaine. Hence, we found that the ability of these drugs to induce locomotor stimulation, accumbal dopamine release and to condition a place preference is reduced in mice treated peripherally with a GHS-R1A antagonist. These effects of drugs of abuse, considered to constitute part of the addiction process, are intimately associated with its reinforcing properties (Wise and Bozarth 1987). The GHS-R1A was administered peripherally in the present study, but it seems likely that it gains access to the CNS and acts at the level of the mesolimbic dopamine system (Jerlhag et al. 2009). Taken together with our recent studies showing that the central ghrelin signalling system is required for alcohol- induced locomotor stimulation, accumbal dopamine release and CPP (Jerlhag et al. 2009), these data support the idea that GHS-R1A may play an important role in addiction processes.

Supporting a role of ghrelin signalling in drug reinforcement are data demonstrating that food restriction, a state which is associated with elevated ghrelin levels, augments cocaine- as well as amphetamine-induced locomotor stimulation, facilitates acquisition of cocaine seeking behaviour and enhances self-administration of cocaine or amphetamine in rats (Carroll et al. 1979; Carroll and Stolz 1983; Bell et al. 1997; Carr et al. 2002; Gualillo et al. 2002). However, a role of stress should not be excluded. Moreover, in rats, elevated plasma level of ghrelin enhances cocaine-seeking and augments cocaine-induced reward, assessed by locomotor stimulation as well as CPP testing (Wellman et al. 2005; Davis et al. 2007; Tessari et al. 2007). The



finding that GHS-R1A is constitutively active in the absence of ligand (Holst et al. 2003) makes it difficult to determine to what extent drug-induced reward is dependent on signalling by endogenous ghrelin or by the activity of the GHS-R1A *per se*.

The ability of psychostimulant drugs to activate the mesolimbic dopamine system and thereby cause reinforcement may be due to increased dopamine synthesis, increased dopamine release and/or enhanced activity of the mesolimbic dopamine neurons.

Neurotransmitters in areas such as the N.Acc. and the ventral tegmental area (VTA) collectively regulate this activation (Samson et al. 1991; White et al. 1995; Reith et al. 1997; Zhang et al. 1997). Here it was shown that GHS-R1A, possibly at the level of the mesolimbic dopamine system, mediates the stimulatory, dopamine releasing and CPP properties of psychostimulant drugs. In the VTA, GHS-R1A is expressed on dopaminergic neurons (Abizaid et al. 2006) and it has been suggested that GHS-R1A regulates the activity of tegmental dopamine neurons via heterodimerization of the GHS-R1A to the dopamine D1 receptor as well as by the constitutive activity of the GHS-R1A (Holst et al. 2003; Jiang et al. 2006). By this route GHS-R1A may modulate the ability and sensitivity of the mesolimbic dopamine neurons to be activated by psychostimulant drugs. The possibility that GHS-R1A influences the synthesis and release of dopamine should also be considered. In the N.Acc. the dopamine released by amphetamine and cocaine activates dopamine receptors and it should therefore be considered that the GHS-R1A antagonist attenuates psychostimulant-induced reinforcement by inhibiting the dopamine receptors in the N.Acc. This appears less likely since JMV2959 did not bind to any of the dopamine receptors (D1, D2L and D2S) in concentrations up to 10  $\mu$ M, whereas it binds to the GHS-R1A with an IC<sub>50</sub> of 32 nM (Moulin et al, 2007). GHS-R1A in the N.Acc. may

also be of importance for psychostimulant induced locomotor stimulation, dopamine release and CPP, even though they do not appear to regulate alcohol consumption (Schneider et al. 2007). Thus, it should be considered that the GHS-R1A antagonist might reduce the psychostimulant-induced reward via interruption of the reported heterodimerization of the GHS-R1A to the dopamine D1 receptor (Jiang et al., 2006). The possibility remains, however, that downstream mechanisms or independent of the mesolimbic dopamine system also may have important roles for the rewarding properties of cocaine and amphetamine.

Our collective findings regarding the role of the central ghrelin signalling system, including the GHS-R1A, in alcohol (Jerlhag et al. 2009) as well as amphetamine- and cocaine-induced reward may also have clinical relevance since hyperghrelinemia is found in individuals with substance use disorder, for example, after methamphetamine use and in alcohol use disorder, specifically in those with high craving scores (Kim et al. 2005; Kraus et al. 2005; Addolorato et al. 2006; Hillemecher et al. 2007; Kobeissy et al. 2007). Furthermore., one study has demonstrated that a SNP in the GHS-R1A gene is associated with high alcohol consumption (Landgren et al. 2008). Collectively, these findings rise important questions regarding the physiological role of ghrelin influencing not only food intake and appetite but clearly also having a broader role in reward induced by addictive drugs such as alcohol, amphetamine and cocaine. Our data suggest that the central ghrelin signaling system, including the GHS-R1A, constitutes a novel potential target for treatment of addictive behaviours such as drug dependence.

## **Acknowledgements**

The authors are grateful for the excellent help of Mrs. Gun Andersson and Mr. Kenn Johannessen. The GHS-R1A antagonist JMV2959 was supplied by Æterna Zentaris under a material transfer agreement. Prof. Jean Martinez and Dr. Jean-Alain Fehrentz are acknowledged for the synthesis of JMV2959. Supported by the Swedish Research Council (K2006-21X-04247-33-3 & K2007-54X-20328-013), the Alcohol Research Council of the Swedish Alcohol Retailing Monopoly, The Swedish Labour Market Insurance, The Swedish brain foundation, Swedish council for tobacco research, the foundations of Wilhelm and Martina Lundgren, Knut and Alice Wallenberg, The Adlerbert Research, Thuring's, Långmanska art, Torsten and Ragnar Söderberg, Magnus Bergvall foundation, European Union (FP7-HEALTH-2009-241592; FP7-KBBE-2009-245009), Novo Nordisk (GeA/AIR), ALF Göteborg (SU7601, SU76540), the Swedish Foundation for Strategic Research to Sahlgrenska Center for Cardiovascular and Metabolic Research (A305-188) and The Swedish Society of Medicine.

## References

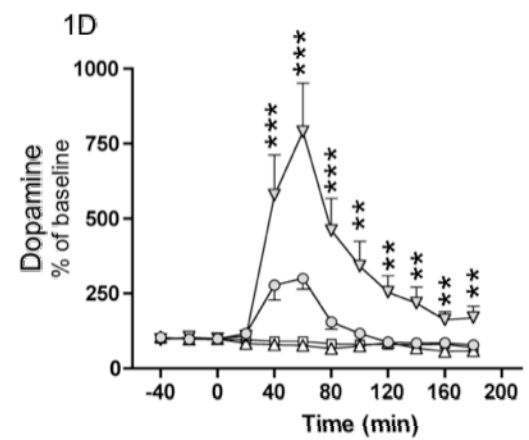
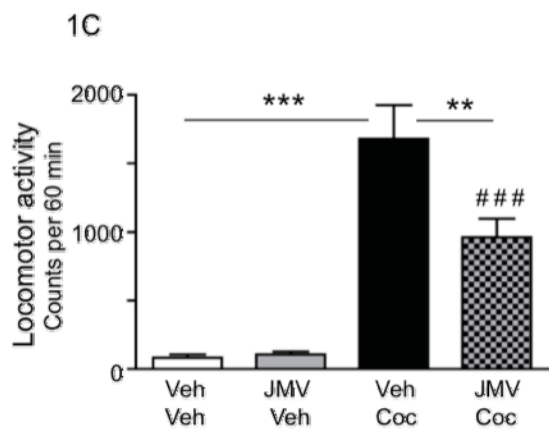
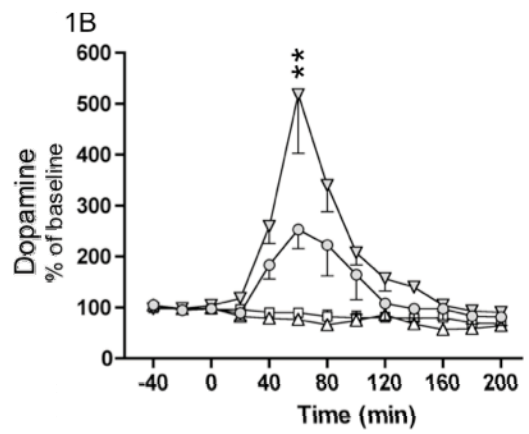
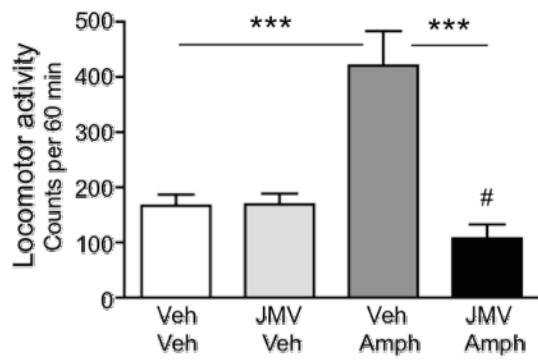
- Abizaid A, Liu ZW, Andrews ZB, Shanabrough M, Borok E, Elsworth JD, Roth RH, Sleeman MW, Picciotto MR, Tschöp MH, Gao XB, Horvath TL (2006) Ghrelin modulates the activity and synaptic input organization of midbrain dopamine neurons while promoting appetite. *J Clin Invest* 116:3229-3239.
- Addolorato G, Capristo E, Leggio L, Ferrulli A, Abenavoli L, Malandrino N, Farnetti S, Domenicali M, D'Angelo C, Vonghia L, Mirijello A, Cardone S, Gasbarrini G (2006) Relationship between ghrelin levels, alcohol craving, and nutritional status in current alcoholic patients. *Alcohol Clin Exp Res* 30:1933-1937.
- Bell SM, Stewart RB, Thomson SC, Meisch RA (1997) Food-deprivation increases cocaine-induced conditioned place preference and locomotor activity in rats. *Psychopharmacology* 131: 1-8.
- Blomqvist O, Engel JA, Nissbrandt H, Söderpalm B (1993) The mesolimbic dopamine-activating properties of ethanol are antagonized by mecamylamine. *European Journal of Pharmacology* 249: 207-213.
- Carr DB, Sesack SR (2000) Projections from the rat prefrontal cortex to the ventral tegmental area: target specificity in the synaptic associations with the mesoaccumbens and mesocortical neurons. *J Neurosci* 20: 3864-3873.
- Carroll ME, France CP, Meisch RA (1979) Food deprivation increases oral and intravenous drug intake in rats. *Science* 205: 319-321.
- Carroll ME, Stotz DC (1983) Oral d-amphetamine and ketamine self-administration by rhesus monkeys: effects of food deprivation. *J Pharmacol Exp Ther* 227(1):28-34.
- Davis KW, Wellman PJ, Clifford PS (2007) Augmented cocaine conditioned place preference in rats pretreated with systemic ghrelin. *Regul Pept.* 140:148-52.
- Dickson SL, Luckman SM (1997) Induction of c-fos messenger ribonucleic acid in neuropeptide Y and growth hormone (GH)-releasing factor neurons in the rat arcuate nucleus following systemic injection of the GH secretagogue, GH-releasing peptide-6. *Endocrinology.* 138:771-7.
- Engel JA, Fahlke C, Hulthe P, Hård E, Johannessen K, Snape B, Svensson L (1988) Biochemical and behavioral evidence for an interaction between ethanol and calcium channel antagonists. *Journal of neural transmission* 74: 181-193.
- Engel JA, Falkhe C, Hård E, Johannessen K, Svensson L, Söderpalm B (1992) Serotonergic and dopaminergic involvement in ethanol intake. *Clinical neuropharmacology* 15: 64A-65A.
- Franklin KBJ, Paxinos G (1996) *The Mouse Brain in Stereotaxic Coordinates*. Academic Press, New York.
- Gualillo O, Caminos JE, Nogueiras R, Seoane LM, Arvat E, Ghigo E, Casanueva FF, Dieguez C (2002) Effects of food restriction on ghrelin in normal-cycling female rats and in pregnancy. *Obes Res* 10 (7): 682-687.
- Hewson AK, Tung LY, Connell DW, Tookman L, Dickson SL (2002) The rat arcuate nucleus integrates peripheral signals provided by leptin, insulin, and a ghrelin mimetic. *Diabetes.* 51:3412-9.
- Hillemacher T, Kraus T, Rauh J, Weiss J, Schanze A, Frieling H, Wilhelm J, Heberlein A, Groschl M, Sperling W, Kornhuber J, Bleich S (2007) Role of Appetite-Regulating Peptides in Alcohol Craving: An Analysis in Respect to Subtypes and Different Consumption Patterns in Alcoholism. *Alcohol Clin Exp Res* 31:950-4.

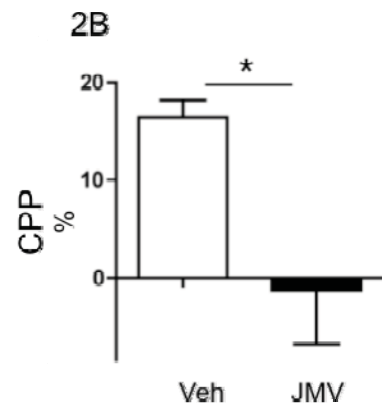
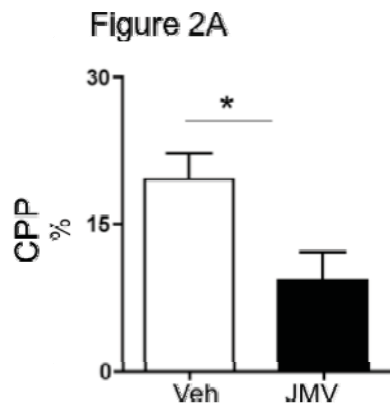
- Holst B, Cygankiewicz A, Jensen TH, Ankersen M, Schwartz TW (2003) High constitutive signaling of the ghrelin receptor - Identification of a potent inverse agonist. *Mol Endocrinol* 17:2201-2210.
- Imperato A, Di Chiara G (1986). Preferential stimulation of dopamine release in the nucleus accumbens of freely moving rats by ethanol. *J Pharmacol Exp Ther* 239: 219-228.
- Jerlhag E, Egecioglu E, Dickson SL, Andersson M, Svensson L, Engel JA (2006) Ghrelin stimulates locomotor activity and accumbal dopamine overflow via central cholinergic mechanisms: implications for its involvement in brain reward. *Addiction biology* 11:45-54.
- Jerlhag E, Egecioglu E, Dickson SL, Douhan A, Svensson L, Engel JA (2007) Ghrelin administration into Tegmental Areas Ghrelin administration stimulates locomotor activity and increases extracellular concentration of dopamine in the nucleus accumbens. *Addiction biology* 12: 6-16.
- Jerlhag E, Egecioglu E, Dickson SL, Svensson L, Engel JA (2008) Alpha-conotoxin MII-sensitive nicotinic acetylcholine receptors are involved in mediating locomotor stimulatory and dopamine enhancing properties of ghrelin. *European Neuropsychopharmacology* 18: 508-518.
- Jerlhag E (2008) Systemic administration of ghrelin induces conditioned place preference and stimulates accumbal dopamine. *Addiction Biology* 13: 358-363.
- Jerlhag E, Egecioglu E, Landgren S, Salomé N, Heilig M, Moechars D, Perissoud D, Dickson SL, Engel JA (2009) Requirement of central ghrelin signaling for alcohol reward *PNAS* 106: 11318-11323.
- Jiang H, Betancourt L, Smith RG (2006) Ghrelin amplifies dopamine signaling by cross talk involving formation of growth hormone secretagogue receptor/dopamine receptor subtype 1 heterodimers. *Mol Endocrinol.* 20:1772-1785.
- Keen-Rhinehart E, Bartness TJ (2004) Peripheral ghrelin injections stimulate food intake, foraging and food hoarding in Siberian hamster. *Am J Physiol Regul Integr Comp Physiol* 288: R716- 722.
- Kim DJ, Yoon SJ, Choi B, Kim TS, Woo YS, Kim W, Myrick H, Peterson BS, Choi YB, Kim YK, Jeong J (2005) Increased fasting plasma ghrelin levels during alcohol abstinence. *Alcohol Alcohol* 40 (1): 76-79.
- Kobeissy FH, Jeung JA, Warren MW, Geier JE, Gold MS (2008) Changes in leptin, ghrelin, growth hormone and neuropeptide-Y after an acute model of MDMA and methamphetamine exposure in rats. *Addict Biol* 13:15-25.
- Kojima M, Hosoda H, Date Y, Nakazato M, Matsuo H, Kangawa K (1999) Ghrelin is a growth-hormone-releasing acylated peptide from stomach. *Nature* 402: 656-660.
- Kraus T, Schanze A, Groschl M, Bayerlein K, Hillemacher T, Reulbach U, Kornhuber J, Bleich S (2005) Ghrelin levels are increased in alcoholism. *Alcohol Clin Exp Res.* 12: 2154-2157.
- Landgren S, Jerlhag E, Zetterberg H Gonzalez-Quintela A, Olofsson U, Nilsson S, Blennow K, Engel JA (2008) Association of pro-ghrelin and GHS-R1A polymorphisms and haplotypes with heavy alcohol-use and body-mass. *Alcoholism: Clinical and Experimental Research* 32: 2054-2061.
- Malik S, McGlone F, Bedrossian D, Dagher A (2008) Ghrelin Modulates Brain Activity in Areas that Control Appetitive Behavior. *Cell Metab* 7:400-409
- Moulin A, Demange L, Berge G, Gagne D, Ryan J, et al. (2007) Toward potent ghrelin receptor ligands based on trisubstituted 1,2,4-triazole structure. 2.

- Synthesis and pharmacological in vitro and in vivo evaluations. *J Med Chem* 50:5790-5806.
- Nogueiras R, Perez-Tilve D, Wortley KE, Tschöp M. (2006) Growth hormone secretagogue (ghrelin-) receptors--a complex drug target for the regulation of body weight. *CNS Neurol Disord Drug Targets.* 5 :335-43.
- Reith ME, Li MY, Yan QS (1997) Extracellular dopamine, norepinephrine, and serotonin in the ventral tegmental area and nucleus accumbens of freely moving rats during intracerebral dialysis following systemic administration of cocaine and other uptake blockers. *Psychopharmacology (Berl).* 134 :309-17.
- Salomé N, Haage D, Perrissoud D, Moulin A, Demange L, Egecioglu E, Fehrentz J-A, Martinez J, Dickson SL (2009) Anorexigenic and electrophysiological actions of novel ghrelin receptor (GHS-R1A) antagonists in rats. *Eur J Pharmacol* 612:167-73
- Samson HH, Tolliver GA, Haraguchi M, Kalivas PW (1991) Effects of D-amphetamine injected into the n. accumbens on ethanol reinforced behavior. *Brain Res Bull.* 27: 267-271.
- Sanchis-Segura C, Spanagel R (2006) Behavioural assessment of drug reinforcement and addictive features in rodents: an overview. *Addiction Biology* 11:2-38.
- Schneider ER, Rada P, Darby RD, Leibowitz SF, Hoebel BG (2007) Orexigenic peptides and alcohol intake: Differential effects of orexin, galanin, and ghrelin. *Alcohol Clin Exp Res* 31:1858-1865
- Tessari M, Catalano A, Pellitteri M, Di Francesco C, Marini F, Gerrard PA, Heidbreder CA, Melotto S (2007) Correlation between serum ghrelin levels and cocaine-seeking behaviour triggered by cocaine associated conditioned stimulus in rats. *Addict Biol* 12: 22-29.
- Wellman PJ, Davis KW, Nation JR (2005) Augmentation of cocaine hyperactivity in rats by systemic ghrelin. *Regul Pept* 125: 151-4.
- Westerink BHC (1995) Brain microdialysis and its applications for the study of animal behaviour. *Behav Brain Res* 70: 103-124.
- White FJ, Hu XT, Zhang XF, Wolf ME. (1995) Repeated administration of cocaine or amphetamine alters neuronal responses to glutamate in the mesoaccumbens dopamine system. *J Pharmacol Exp Ther.* 273 :445-54.
- Wise RA, Bozarth MA (1987) A psychomotor stimulant theory of addiction. *Psychol Rev* 94(4):469-492.
- Zhang XF, Hu XT, White FJ, Wolf ME (1997) Increased responsiveness of ventral tegmental area dopamine neurons to glutamate after repeated administration of cocaine or amphetamine is transient and selectively involves AMPA receptors. *J Pharmacol Exp Ther.* 281:699-706.

## Figures

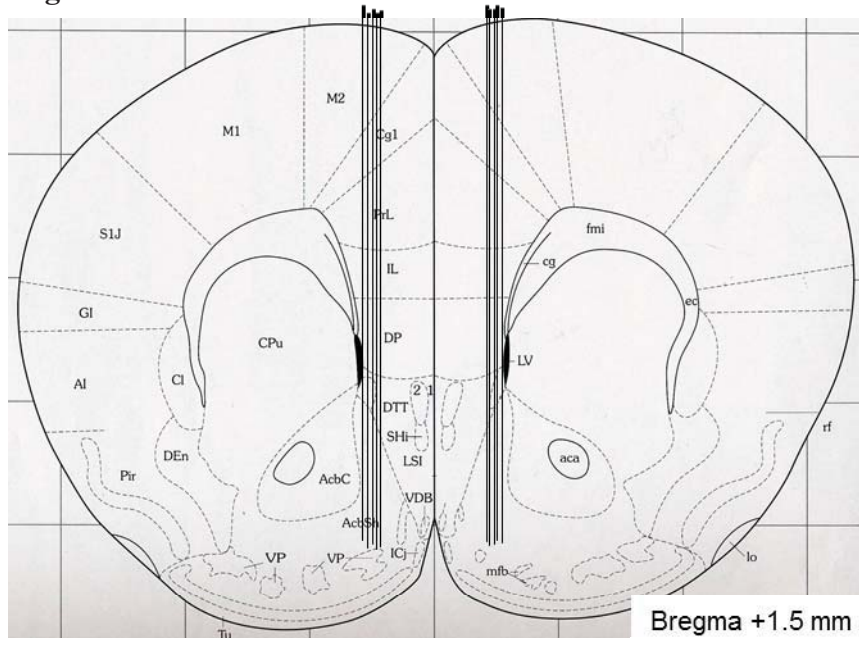
Figure 1A







**Figure 3**



## Figure legends

*Figure 1. Suppressed ghrelin signaling, by ghrelin receptor (GHS-R1A) antagonist (JMV2959), attenuates amphetamine- and cocaine-induced locomotor stimulation and accumbal dopamine release.*

(A) Amphetamine-induced locomotor stimulation was attenuated by a single i.p. injection of JMV2959 to but not by vehicle injection in mice (n=8 in each group; \*\*\* $P < 0.001$ , # $P = n.s$  for Veh-Veh vs JMV-Amph). (B) The amphetamine-induced increase in accumbal dopamine release was absent in GHS-R1A antagonist (JMV2959, i.p.)- but not in vehicle-treated mice (n=8 in Veh-Veh (square), Veh-Amph (filled triangle) and JMV-Veh (triangle) group and n=9 in JMV-Amph (circle) group). This difference was evident at time interval 60 min (\*\* $P < 0.01$ , Bonferroni post-hoc test). Even though JMV2959 does not completely block the amphetamine-induced accumbal dopamine release, this increase fails to reach statistical significance compared to vehicle treatment. (C) Cocaine-induced locomotor stimulation was attenuated by a single i.p. injection of JMV2959 to but not by vehicle injection in mice (n=8 in each group). (\*\* $P < 0.01$  \*\*\* $P < 0.001$ , ### $P < 0.001$  for Veh-Veh vs JMV-Coc). (D) The cocaine-induced increase in accumbal dopamine release was absent in GHS-R1A antagonist (JMV2959, i.p.)- but not in vehicle-treated mice (n=8 in Veh-Veh (square) and JMV-Veh (triangle) group, n=9 in Veh-Coc (filled triangle) and n=10 in JMV-Coc group (circle). This difference was evident at time intervals 20-180 min (\*\* $P < 0.01$ , \*\*\* $P < 0.001$ ). Even though JMV2959 does not completely block the cocaine-induced accumbal dopamine release, this increase fails to reach statistical significance compared to vehicle treatment.

*Figure 2. The ghrelin receptor (GHS-R1A) antagonist (JMV2959), attenuates amphetamine- and cocaine-induced conditioned place preference (CPP)*

(A) The amphetamine-induced CPP (n=8) was attenuated by an acute single i.p. injection of the GHS-R1A antagonist, JMV2959 (n=8), in mice. (B) A cocaine-induced CPP in mice pre-treated with vehicle (n=7) was obtained and pre-treatment with JMV2959 (n=8) attenuated this stimulation in mice (\* $P$ <0.05). All values represent mean  $\pm$  SEM.

*Figure 3. Verification of probe placement*

A coronal mouse brain section showing ten representative probe placements (illustrated by vertical lines) in the N.Acc. of mice used in the present study (Franklin and Paxinos, 1996). Ten representative placements are illustrated, but all other placements were within the N.Acc. shell. The probe is not shown to scale and the outer diameter of the probe was 310  $\mu$ m. Placements outside this area were not included in the statistical analysis. The number given in the brain section indicates millimetres anterior (+) from bregma.